

ICEWINE MITTENS

Designed by
Emily Holbert Kellam



ICEWINE MITTENS

With the first deep frosts of winter comes one of the rarest harvests in the world, as naturally frozen-on-the-vine grapes are swiftly cut, pressed, and vinted into sweet, delicious *Icewine*. For knitters, cold weather brings about that time of year to show off our winter-wear!

A sweet, heady blend of colour and pattern, these mittens feature an extra-long gauntlet and cuff with two-colour ribbing to fit snugly over coat-sleeves and help keep out the chill.



MATERIALS:

- 2.75mm needles – set of 5 dpns or long circular(s)
- 100g worsted weight yarn in Main Colour
- 100g worsted weight yarn in Contrast Colour
- Tapestry needle
- About ½m brightly coloured waste yarn

GAUGE: 15 sts. X 16 rows = 5cm² (2"²)

ABBREVIATIONS:

K = Knit	K2tog = Knit two together	MC = Main Colour	St(s). = Stitch(es)
P = Purl	SSK = Slip-slip-knit	CC = Contrast Colour	

MITTENS: *Knit two – one from Left Mitten Chart and one from Right Mitten Chart.*

Begin Cuff:

Cast On **56** stitches in MC and join in the round.
Knit **1** round.
Begin corrugated ribbing: *k1 MC, p1 CC*
Knit corrugated ribbing for **15** rounds (*or as long as you want!*).

Begin Mitten:

Knit **1** round in MC.
Begin knitting from Mitten Chart.

Peasant Thumb – Knit **10** sts. in waste yarn at thumb placement line. Slip these 10 sts. back to left needle, and continue knitting from chart as normal. This will hold your thumb placement until you have knit all of the mitten chart. *Adjust placement line as needed for short or long hands!*

Mitten Tip – Break yarn leaving a small tail. Thread one strand onto tapestry needle and thread through remaining **6** sts. Pull tightly and secure inside mitten tip.
Weave in ends.

Thumb – Pick up **10** sts. both below and above waste yarn (20 sts. total): remove waste yarn.

Pick up **2** extra sts. on either side of thumb opening. (24 sts. total)

Knit Thumb Chart (same on front and back).

Increase/decrease thumb chart rows as needed for short or long thumbs! (Pattern has 4-row repeats.)

For *Thumb Tip*, finish as per *Mitten Tip*.







Finishing:

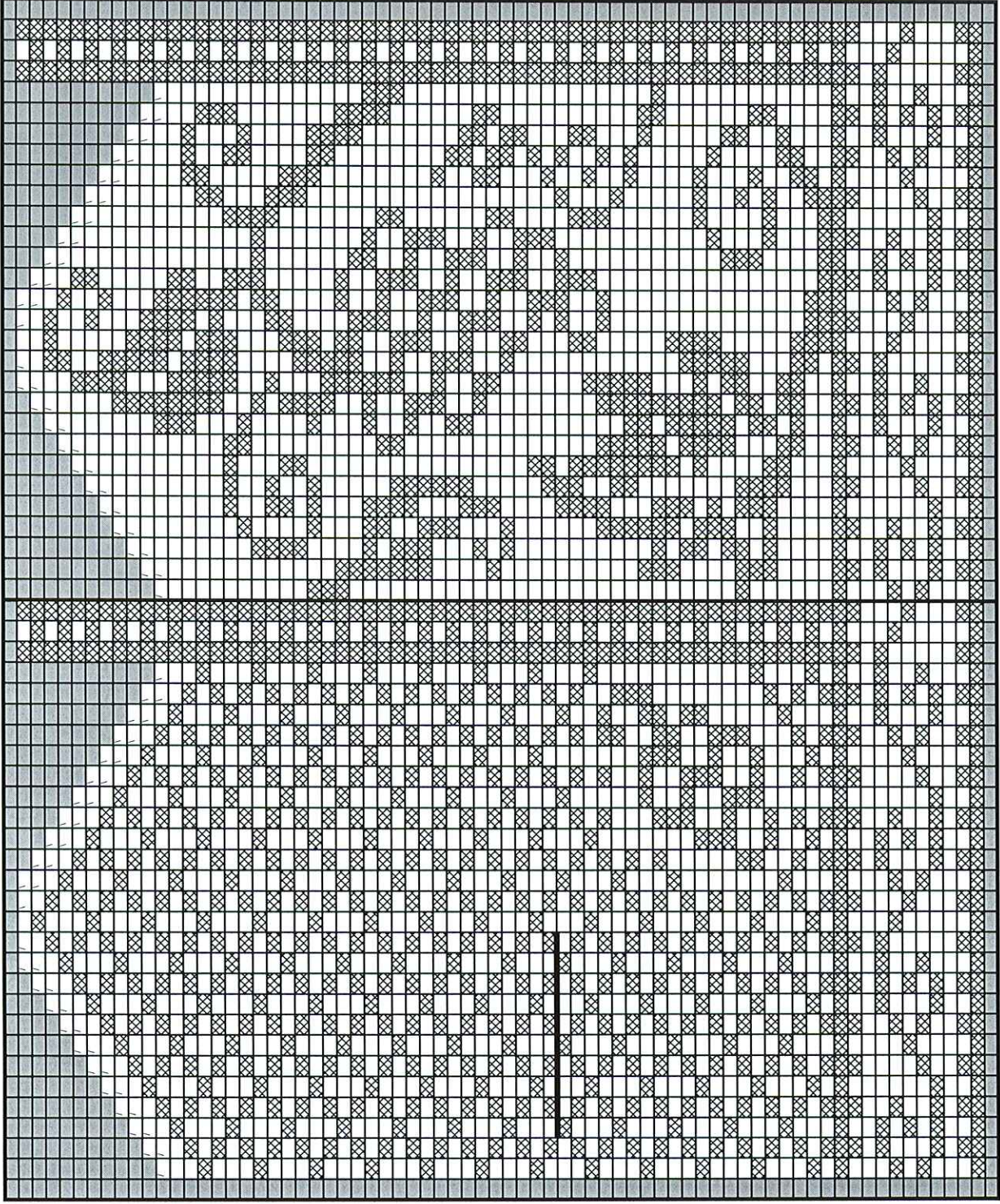
Weave in all ends. Soak gently in warm water, and block mittens lightly.

Go out in the snow and enjoy your new mittens!!

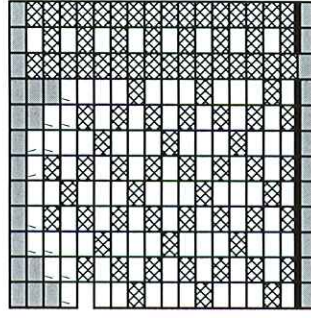
ICEWINE MITTENS

Left Mitten Chart

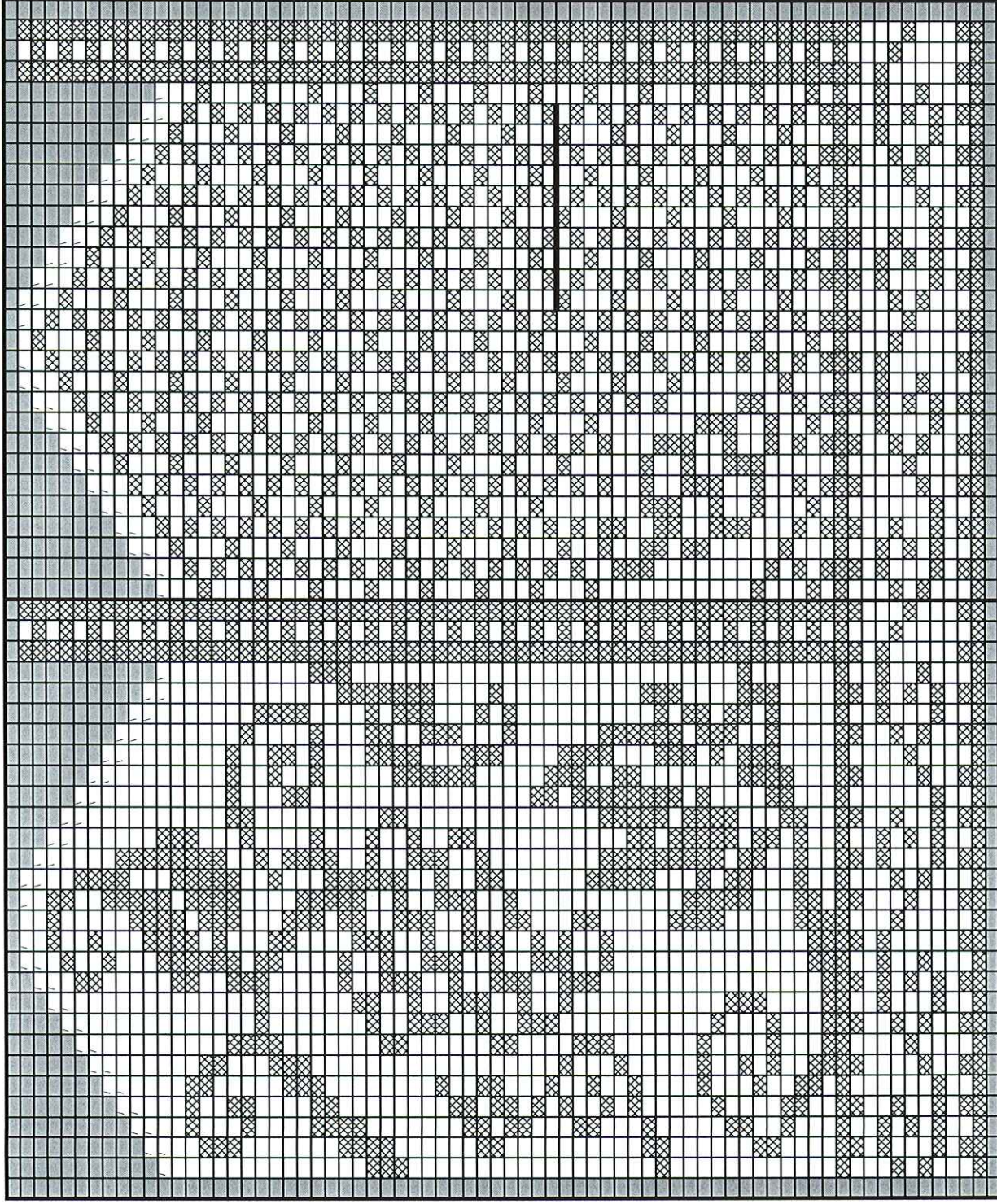
-  = Main Colour (MC)
-  = Contrast Colour (CC)
-  = K2tog
-  = Ssk
-  = No Stitch
-  = Thumb Placement






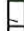


Thumb Chart



ICEWINE MITTENS



Right Mitten Chart

-  = Main Colour (MC)
-  = Contrast Colour (CC)
-  = K2tog
-  = Ssk
-  = No Stitch
-  = Thumb Placement

Thumb Chart

